

WALL BOARD



Wall board is a glass wool board which has water repellent properties owing to the fact that it contains silicone. It is used in cavity walls, at double layer sandwich wall panels for fire safe, thermal and sound insulation purposes.

Application

Wall Board is applied loose in between two wall components such as bricks, AAC blocks, concrete blocks at the facades. In this application, known as cavity wall or sandwich wall insulation, two wall components should be connected to each other with special fasteners at certain intervals. Owing to their water repellent properties, the boards do not allow any water leakage which might occur as a result of any damage on the facade cladding of the building. By this way, they remain dry and keep their insulation properties. Additionally, even in the case of condensation they allow insulation properties to be maintained by throwing the condensed water out quickly.

Thickness (cm)	Width x Length (cm)	Package (m ²)
3	60 x 120	14,40
4	60 x 120	10,80
5	60 x 120	8,64
6	60 x 120	7,20
7,5	60 x 120	5,76
10	60 x 120	4,32



- High thermal insulation
- Fire safety
- Sound insulation
- Easy to apply
- Lightweight



TECHNICAL DATA SHEET

izocam Wall Board

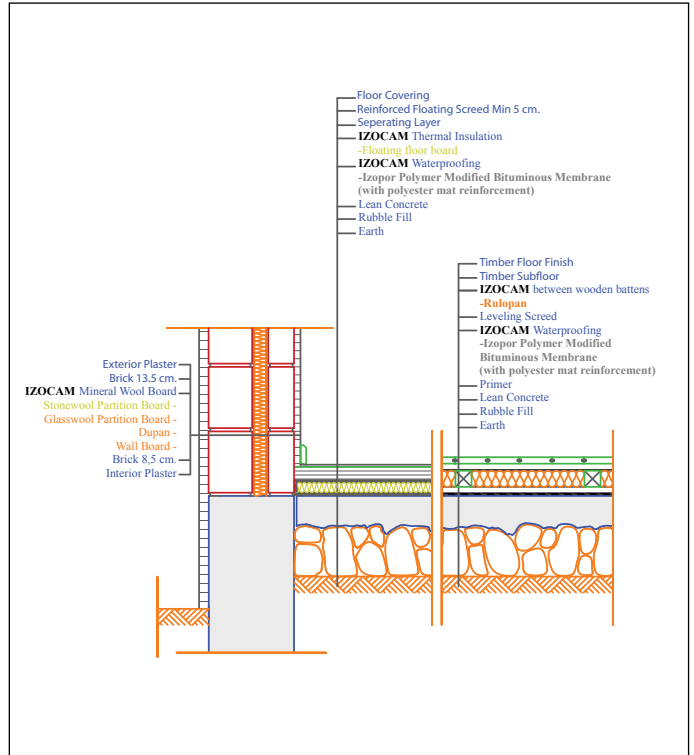
Properties	Symbol	Unit	Description						Tolerance	Standard
Material	-	-	Glass Wool						-	TS EN 13162
Density	ρ	kg/m ³	22						+/-10%	-
Width	w	mm	600						+/-1,5%	TS EN 822
Length	l	mm	1200						+/-2%	TS EN 822
Thickness	t	mm	30	40	50	60	75	100	T3 **	TS EN 823
Facing	-	-	Unfaced						-	-
Reaction to fire	-	-	A1						-	TS EN 13501-1
Squareness	S_b	mm/m	max. 5						-	TS EN 824
Flatness	S_{max}	mm	max. 6						-	TS EN 825
Dimensional Stability	$\Delta\epsilon_d$	%	max. 1						-	TS EN 1604
Declared Thermal Conductivity (10 °C)	λ_D	W/m.K	0,035						-	TS EN 12667/12939
Thermal Resistance	R_D	m ² .K/W	0,85	1,10	1,40	1,70	2,10	2,85	-	-
Short Term Water Absorption	W_p	kg/m ²	max 1						-	TS EN 1609
Specific Heat *	c	kJ/(kg.K)	0,84						-	EN 12524
Water Vapor Diffusion Resistance Coefficient *	μ	-	1						-	TS EN 12086
Dynamic Elasticity *	Edyn	kN/m ²	0,8						-	DIN 52214
Packaging Material	-	-	PE Film						-	-

* Literature value.

** T3: -3% or -3 mm; +10% or +10 mm. The biggest value is chosen at minus tolerance, the smallest value is chosen at plus tolerance.

Safety Reminders for Loading, Unloading, Shipping and Storing

- These operations should be done indoors in case of rainy weather conditions.
- Loading and unloading should be done by (at least) two people.
- Products should be wrapped by a waterproof cover even if the shipping distance is short.
- Products should not be superposed with pallets.
- Products should not be put into upright position.
- Products should not be stepped on and should not be used as steps.
- Products should not be pulled by their package.
- Products should be in packages (10 each) and maximum 6 packages can be superposed.
- Before binding, hard cardboards (minimum 20 x 50 cm) should be put on the corners of packages to protect against possible damages by ropes.
- Storage area should be protected against any wet threats such as rain, float, etc. Indoor spaces should be preferred.
- The packages should be put on the floor with extra care so the corners of the product especially is not damaged by a hit.



Izocam is not responsible for any problem because of misprinting. Izocam, the manufacturer, reserves the right to alter product specifications without prior notice. Izocam also manufactures special products upon request. For your requirements, you are requested to contact our Export Department.

