

STONE WOOL PARTITION WALL BOARD



It is a stone wool board used for fire safe thermal and sound insulation of lightweight partition walls, stairwells and elevator shafts, adjacent walls, inner surfaces of exterior walls.

Application

İzocam Stone Wool Partition Wall Board is placed into the timber or metal construction. It is used for thermal and sound insulation and fire safety especially when it is applied at the partition walls of the office buildings. Depending on the application space, gypsum boards are fastened on the side facing the interior or on both sides by profiles. It is recommended to apply rubber tapes (İzocamtape) to the construction especially for the sound insulation applications in order to avoid sound bridges.

Thickness (cm)	Width x Length (cm)	Package (m ²)
3	60 x 120	11,52
4	60 x 120	7,20
5	60 x 120	5,76
6	60 x 120	5,04
8	60 x 120	3,60
10	60 x 120	2,88
12	60 x 120	1.44



- Thermal insulation
- Fire safety
- Sound insulation
- Easy to apply
- Available in different sizes
- Lightweight



TECHNICAL DATA SHEET

izocam Stone Wool Partition Wall Board

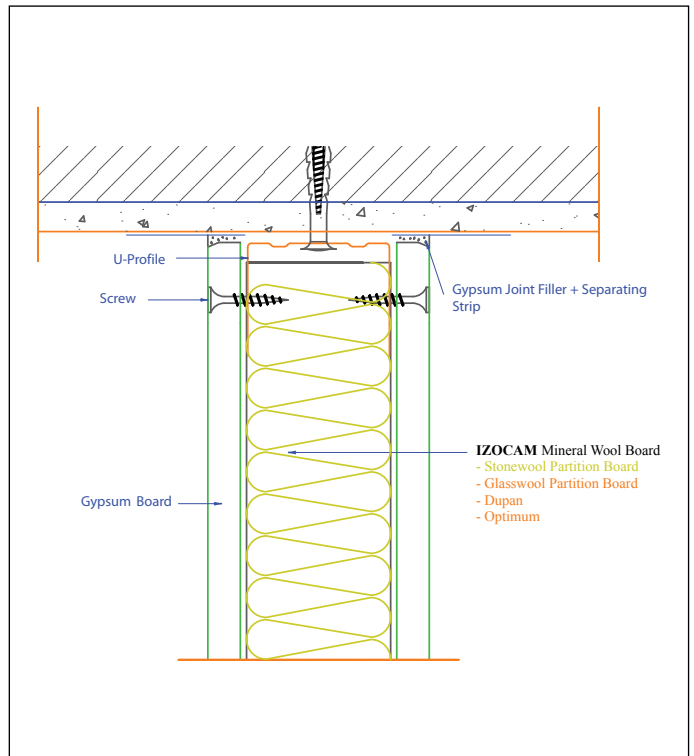
Properties	Symbol	Unit	Description								Tolerance	Standard
Material	-	-	Stone Wool								-	TS EN 13162
Material Type	-	-	ABL				ABL - Eco				-	-
Density	ρ	kg/m ³	52				40				+/-10%	-
Width	w	mm	600								+/-1,5%	TS EN 822
Length	l	mm	1200								+/-2%	TS EN 822
Thickness	t	mm	30	40	50	60	80	100	120	T3 *	TS EN 823	
Facing	-	-	Unfaced								-	-
Reaction to fire	-	-	A1								-	TS EN 13501-1
Squareness	S_b	mm/m	max. 5								-	TS EN 824
Flatness	S_{max}	mm	max. 6								-	TS EN 825
Dimensional Stability	$\Delta\varepsilon_d$	%	max. 1								-	TS EN 1604
Declared Thermal Conductivity (10 °C)	λ_D	W/mK	0,037				0,038				-	TS EN 12667/12939
Thermal Resistance	ABL	R_D	m ² .K/W	0,80	1,05	1,35	1,60	2,15	2,70	3,20	-	TS EN 13162
	ABL-Eko			0,75	1,05	1,30	1,55	2,10	2,60	3,15		
Water Vapor Diffusion Resistance Coefficient	μ	-	1								-	TS EN 12086
Short Term Water Absorption	W_p	kg/m ²	max. 1								-	TS EN 1609
Long Term Water Absorption with Diffusion	W_{lp}	kg/m ²	max. 3								-	TS EN 12087
Packaging Material	-	-	PE Film								-	-
Other Information	Boards could be coated with yellow/black glass tissue and aluminium foil.											

* T3: -3% or -3 mm; +10% or +10 mm. The biggest value is chosen at minus tolerance, the smallest value is chosen at plus tolerance.

Safety Reminders for Loading, Unloading, Shipping and Storing

- These operations should be done indoors if the weather is rainy.
- Loading and unloading should be done by (at least) two people.
- Products should be put on top of each other with extra care.
- Only backshutter of the truck body should be opened during unloading.
- Unloading should be carried out from backside to the front.
- Products should be wrapped by a waterproof cover even if the shipping distance is short.
- Products should be in packages (10 each) and maximum 6 packages can be superposed.
- Products should not be put into upright position during shipping and storing.
- Storing should be carried out by using pallets. But they should not superposed with pallets.
- Products should not be pulled by their package.
- Products should not be stepped on and should not be used as steps.
- The packages should be put on the floor with extra care so the corners of the product especially is not damaged by a hit.

Izocam is not responsible for any problem because of misprinting. Izocam, the manufacturer, reserves the right to alter product specifications without prior notice. Izocam also manufactures special products upon request. For your requirements, you are requested to contact our Export Department.



ENTYABL2015/06