

RULOPAN



İzocam Rulopan is a glass wool blanket manufactured with yellow glass tissue facing on both sides. It is used on the slabs of non utilized attics, between the rafters of utilized attics, for horizontal applications where no load is present.

Application

İzocam Rulopan is easy to hold and to be rolled out since it is faced with glass tissue on both sides. Due to its lightweight property, it is quite easy to carry it up to the roof and to cut to be installed. It can be applied easily with no waste pieces and each piece can be utilized. Since it is elastic it can fill the gaps thoroughly. In order to reduce the condensation risk in winter and to discharge the overheated air in the attic, upper part of the insulation should be kept ventilated. No weight should be placed on the material after the application and it should not be walked on. The blankets should not be covered over by nylon or similar type of covers.

Thickness (cm)	Width x Length (cm)	Package (m ²)
8	120 x 800	9,60
10	120 x 600	7,20
12	120 x 500	6,00
14	120 x 500	6,00



- Thermal insulation
- Fire safety
- Sound insulation
- Easy to install
- Available in different sizes
- Lightweight



TECHNICAL DATA SHEET

izocam Rulopan

Properties	Symbol	Unit	Description				Tolerance	Standard
Material	-	-	Glass Wool				-	TS EN 13162
Density	ρ	kg/m ³	15				+/-10%	-
Width	w	mm	1200				+/-1,5%	TS EN 822
Length	l	mm	8000	6000	5000		+/-2%	TS EN 822
Thickness	t	mm	80	100	120	140	T1 **	TS EN 823
Facing	-	-	Yellow glass tissue				-	-
Reaction to fire	-	-	A1				-	TS EN 13501-1
Declared Thermal Conductivity (10 °C)	λ_D	W/m.K	0,040				-	TS EN 12667/12939
Thermal Resistance	R_D	m ² .K/W	2,00	2,50	3,00	3,50	-	-
Specific Heat *	c	kJ/(kg.K)	0,84				-	EN 12524
Water Vapor Diffusion Resistance Coefficient **	μ	-	1				-	TS EN 12086
Dynamic Elasticity *	Edyn	kN/m ²	0,8				-	DIN 52214
Packaging Material	-	-	PE Film				-	-

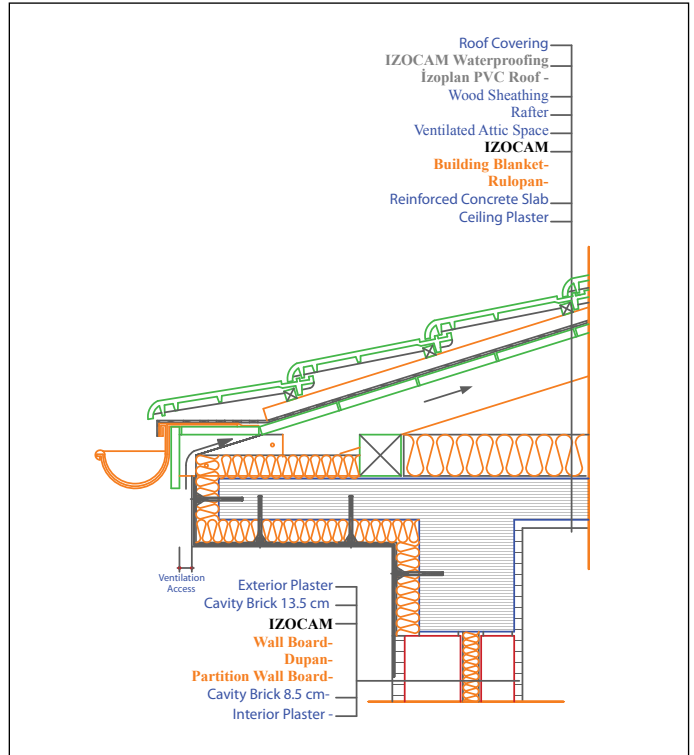
* Literature value.

** T1: -5% or -5 mm, the biggest value is chosen at minus tolerance.

Safety Reminders for Loading, Unloading, Shipping and Storing

- These operations should be done indoors in case of rainy weather conditions.
- Loading and unloading should be done by (at least) two people.
- Products should be put on top of each other with extra care.
- Only backshutter of the truck body should be opened during unloading.
- Unloading should be carried out from backside to the front.
- Products should be wrapped by a waterproof cover even if the shipping distance is short.
- Products should not be put into upright position during shipping and storing.
- Storing should be carried out by using pallets. But the products should not be superposed with pallets.
- Products should not be pulled by their package.
- Products should not be stepped on and should not be used as steps.
- The packages should be put on the floor with extra care so the corners of the product especially is not damaged by a hit.

Izocam is not responsible for any problem because of misprinting. Izocam, the manufacturer, reserves the right to alter product specifications without prior notice. Izocam also manufactures special products upon request. For your requirements, you are requested to contact our Export Department.



ENCYRP2015/06

