

OVEN BOARD

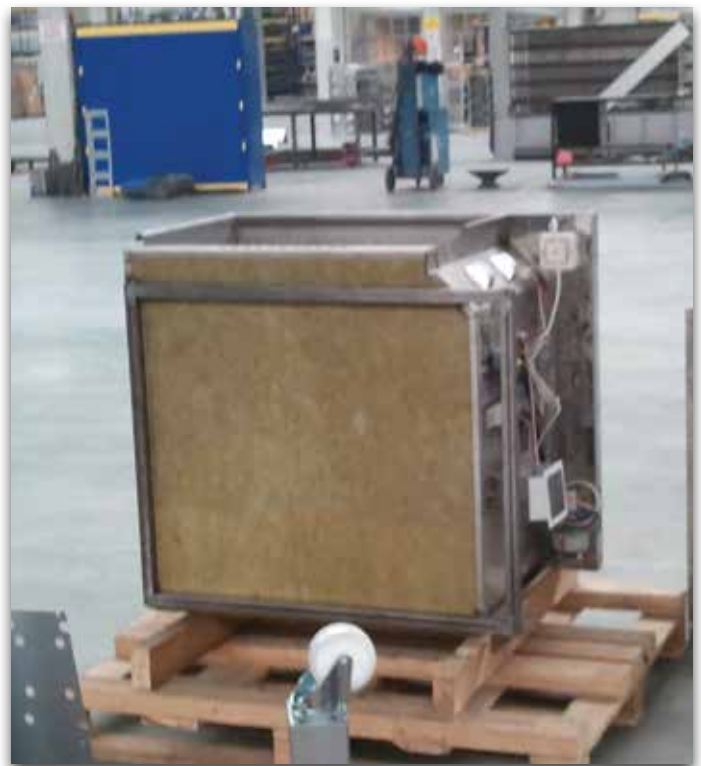


It is a stone wool board which is used in oven production for thermal insulation purposes.

Application

Since it is supplied to the firms producing ovens, it is applied according to the details which the customer provides. It is possible to manufacture with different technical properties in different sizes regarding to the customer needs.

Thickness (mm)	Width x Length (mm)	Package (m ²)
20	400 x 1600	23,04
30	400 x 1600	15,36
40	400 x 1600	11,52



- Thermal insulation
- Easy to apply
- Available in different sizes
- Lightweight



TECHNICAL DATA SHEET

İzocam Oven Board

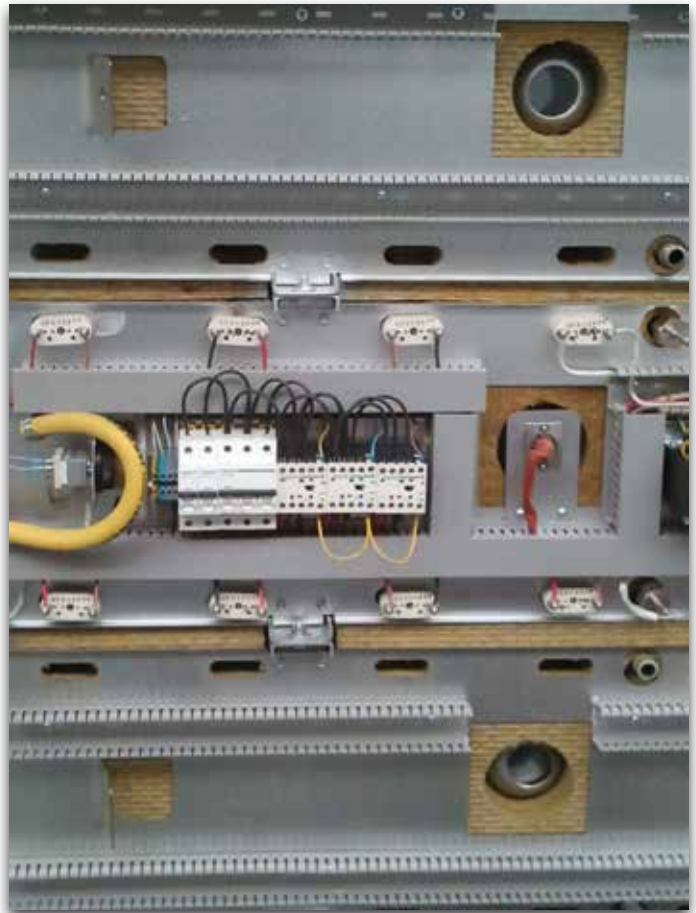
Properties	Symbol	Unit	Description				Tolerance	Standard
Material	-	-	Stone Wool				-	-
Density	ρ	kg/m ³	40				+/-10%	-
Width	w	mm	400				+/-1,5%	TS EN 822
Length	l	mm	1600				+/-2%	TS EN 822
Thickness	t	mm	30				*	TS EN 823
Facing	-	-	Unfaced		Al-foil		-	-
Reaction to fire	-	-	A1				-	TS EN 13501-1
Declared Thermal Conductivity	T	°C	50	100	150	200	-	TS EN 12667/12939 13787
	λ_D	W/m.K	0,043	0,055	0,070	0,090		
Max. Service Temperature	-	°C	450				-	TS EN 14706
Water Vapor Diffusion Resistance Coefficient **	μ	-	1				-	TS EN 12086
Packaging Material	-	-	PE Film				-	-

* -3% or -3 mm; +5% or +5 mm. The biggest value is chosen at minus tolerance, the smallest value is chosen at plus tolerance.

** Literature value

Safety Reminders for Loading, Unloading, Shipping and Storing

- These operations should be done indoors if the weather is rainy.
- Products should be wrapped by a waterproof cover even if the shipping distance is short.
- Storing should be carried out by using pallets. Damaged or deformed pallets should not be used.
- Products should not be superposed with pallets.
- Products should not be stepped on and should not be used as steps.
- Before binding, hard cardboards (minimum 20 x 50 cm) should be put on the corners of packages to protect against possible damages by ropes.
- Storage area should be protected against any wet threats such as rain, float, etc. Indoor spaces should be preferred.
- Storage area should be flat and non-slippery.
- Loading and unloading should be done by forklift or overhead crane.
- The boards should be carried to the application site one at a time by two people with extra care.



Izocam is not responsible for any problem because of misprinting. Izocam, the manufacturer, reserves the right to alter product specifications without prior notice. Izocam also manufactures special products upon request. For your requirements, you are requested to contact our Export Department.