

OPTIMUM PARTITION WALL



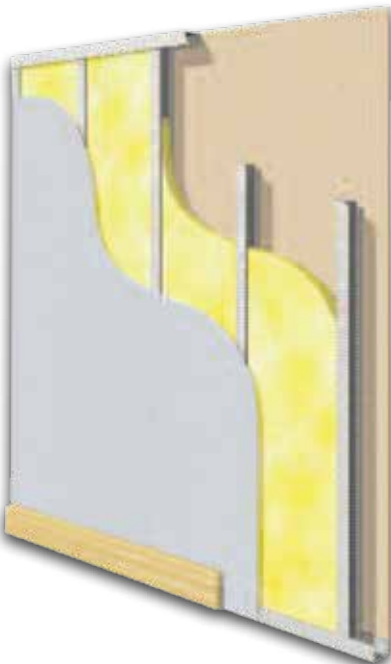
It is a special glass wool blanket faced with glass tissue on both sides. It is used for thermal and sound insulation of lightweight partition walls. For installation it has a system with its special profiles, fastening equipments and accessories.

Application

Plumb line is drawn from the ceiling to the floor and the line that U profile will be fastened is marked. U profile is fastened to the floor and to the ceiling with an anchor at every 45 cm. C profiles are installed in U profiles back to back and partition wall frame is formed. C profiles should be at every 60 cm. Gypsum board is put on one face and Optimum Blankets which have been cut 1 cm longer than the profile height are placed between the profiles. It is recommended to apply rubber tapes (İzocamtape) to the construction in order to reduce vibration. After installing gypsum board, the application is completed.

Despite the fact that Optimum Partition Wall is in blanket form, it can also rise to an upright position owing to its special fibre structure.

Thickness (cm)	Width x Length (cm)	Package (m ²)
5	120 x 2000	24



- Thermal insulation
- Fire safety
- Sound insulation
- Easy to apply
- Lightweight



TECHNICAL DATA SHEET

izocam Optimum Partition Wall

Properties	Symbol	Unit	Description	Tolerance	Standard
Material	-	-	Glass Wool	-	TS EN 13162
Density	ρ	kg/m ³	12	+/-10%	-
Width	w	mm	1200	+/-1,5%	TS EN 822
Length	l	mm	20000	+/-2%	TS EN 822
Thickness	t	mm	50	T1 **	TS EN 823
Facing	-	-	Glass Tissue (Double side)	-	-
Reaction to fire	-	-	A1	-	TS EN 13501-1
Squareness	S _b	mm/m	max. 5	-	TS EN 824
Flatness	S _{max}	mm	max. 6	-	TS EN 825
Dimensional Stability	$\Delta\epsilon_d$	%	max. 1	-	TS EN 1604
Declared Thermal Conductivity (10 °C)	λ_D	W/m.K	0,043	-	TS EN 12667/12939
Thermal Resistance	R _D	m ² .K/W	1,15	-	TS EN 13162
Water Vapor Diffusion Resistance Coefficient *	μ	-	1	-	TS EN 12086
Specific Heat *	c	kJ/(kg.K)	0,84	-	EN 12524
Dynamic Elasticity *	Edyn	kN/m ²	0,8	-	DIN 52214
Packaging Material	-	-	PE Film	-	-
Other Information	Maximum service temperature on the side faced with glass tissue is 200 °C.				

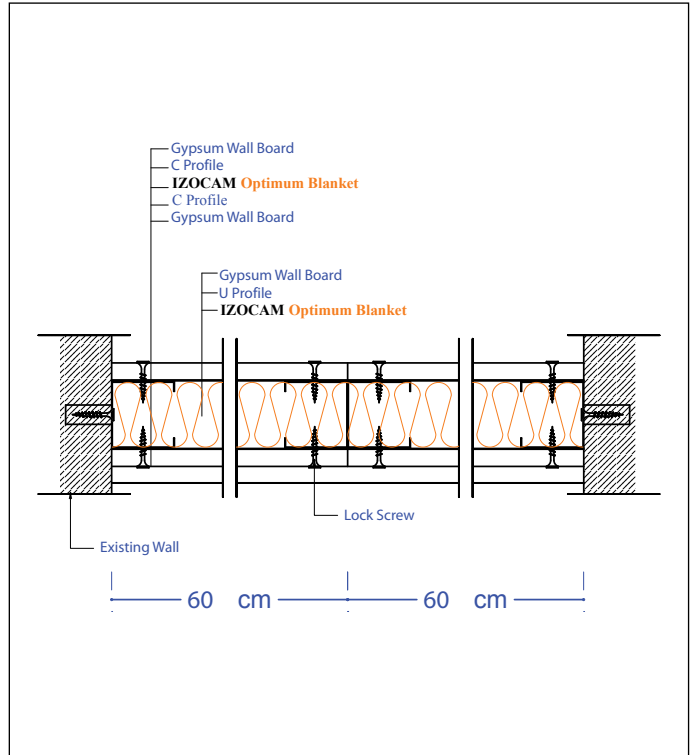
* Literature value.

** T1: -5% or -5 mm, the biggest value is chosen at minus tolerance, the smallest value is chosen at plus tolerance.

Safety Reminders for Loading, Unloading, Shipping and Storing

- These operations should be done indoors in case of rainy weather conditions.
- Loading and unloading should be done by (at least) two people.
- Products should be wrapped by a waterproof cover even if the shipping distance is short.
- Products should not be superposed with pallets.
- Products should not be put into upright position.
- Products should not be stepped on and should not be used as steps.
- Products should not be pulled by their package.
- Products should be in packages (10 each) and maximum 6 packages can be superposed.
- Before binding, hard cardboards (minimum 20 x 50 cm) should be put on the corners of packages to protect against possible damages by ropes.
- Storage area should be protected against any wet threats such as rain, float, etc. Indoor spaces should be preferred.
- The packages should be put on the floor with extra care so the corners of the product especially is not damaged by a hit.

Izocam is not responsible for any problem because of misprinting. Izocam, the manufacturer, reserves the right to alter product specifications without prior notice. Izocam also manufactures special products upon request. For your requirements, you are requested to contact our Export Department.



ENCYOAB2015/06

