

OPTIMUM CEILING



Izocam Optimum Ceiling is an insulation system composed of glass wool blanket, special profiles that enable the installation and window accessories. Glass wool blanket is faced with kraft paper on one side and takes the form of a board when it is rolled out. The system is used for the thermal and sound insulation of the ceilings.

Application

Anchors are placed every 50 cm along the axis where C profiles to be applied then space bars are installed into the anchors. Optimum Ceiling Blankets are cut by appropriate size and placed into the space bars. Adjusting nuts are installed into the space bars to fix the glass wool. Consequently, C profiles placed into the adjusting nut. Then gypsum boards are installed to the C profiles and the application is completed.

Thickness (cm)	Width x Length (cm)	Package (m ²)
5	120 x 1350	16,2
8	120 x 540	6,48



- High thermal insulation
- Fire safety
- High sound insulation
- Easy to apply
- Lightweight



TECHNICAL DATA SHEET

Izocam Optimum Ceiling

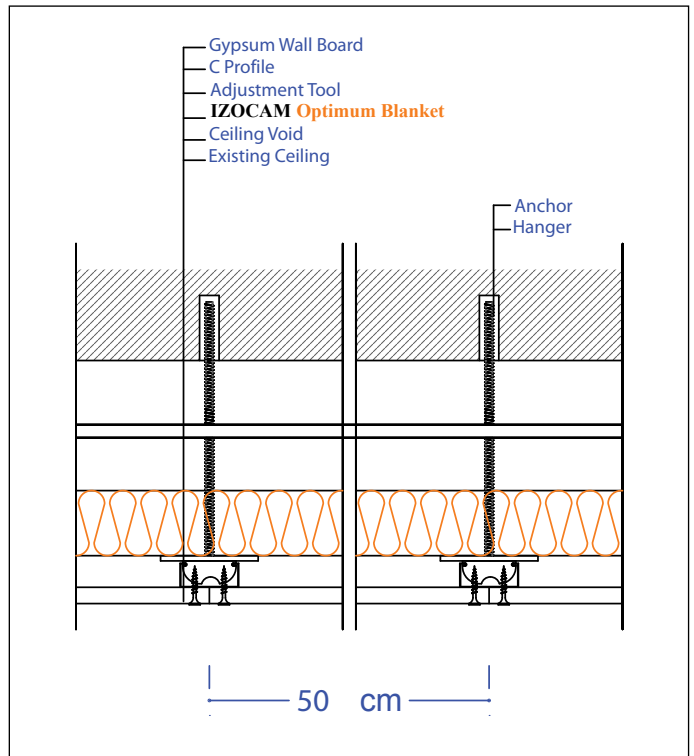
Properties	Symbol	Unit	Description		Tolerance	Standard
Material	-	-	Glass Wool		-	TS EN 13162
Density	ρ	kg/m ³	15	22	+/-10%	-
Width	w	mm	1200		+/-1,5%	TS EN 822
Length	l	mm	5400	13500	+/-2%	TS EN 822
Thickness	t	mm	80	50	T1 **	TS EN 823
Facing	-	-	Kraft Paper		-	-
Reaction to fire	-	-	NPD		-	TS EN 13501-1
Dimensional Stability	$\Delta\varepsilon_d$	%	max. 1		-	TS EN 1604
Declared Thermal Conductivity (10 °C)	λ_D	W/m.K	0,040	0,035	-	TS EN 12667/12939
Thermal Resistance	R_D	m ² .K/W	2,00	1,40	-	TS EN 13162
Specific Heat *	c	kJ/(kg.K)	0,84		-	EN 12524
Dynamic Elasticity *	Edyn	kN/m ²	0,8		-	DIN 52214
Packaging Material	-	-	PE Film		-	-
Other Information	Maximum service temperature on the side faced with kraft paper is 90 °C.					

* Literature value.

** T1: -5% or -5 mm, the biggest value is chosen at minus tolerance.

Safety Reminders for Loading, Unloading, Shipping and Storing

- These operations should be done indoors in case of rainy weather conditions.
- Loading and unloading should be done by (at least) two people.
- Products should be wrapped by a waterproof cover even if the shipping distance is short.
- Products should not be superposed with pallets.
- Products should not be put into upright position.
- Products should not be stepped on and should not be used as steps.
- Products should not be pulled by their package.
- Products should be in packages (10 each) and maximum 6 packages can be superposed.
- Before binding, hard cardboards (minimum 20 x 50 cm) should be put on the corners of packages to protect against possible damages by ropes.
- Storage area should be protected against any wet threats such as rain, float, etc. Indoor spaces should be preferred.
- The packages should be put on the floor with extra care so the corners of the product especially is not damaged by a hit.



Izocam is not responsible for any problem because of misprinting. Izocam, the manufacturer, reserves the right to alter product specifications without prior notice. Izocam also manufactures special products upon request. For your requirements, you are requested to contact our Export Department.

