

STONE WOOL DUCT BOARD



It is a stone wool board faced with aluminium foil on one side used for external thermal insulation, internal sound insulation of air conditioning and ventilation ducts.

Application

Before the boards are applied, duct surfaces to be used are cleaned to make sure the surface is free from dust and grease. If cold air insulation is going to be applied for the external thermal insulation, definitely the boards faced with aluminium foil should be used against condensation risk. The boards are installed into the pins (5- 6 pins per m²) fastened to the outside of the duct with foiled side facing the exterior. Board joints are sealed with self adhesive aluminium foil tape with great care to ensure that joints are water impermeable.

| Thickness (cm) | Width x Length (cm) | Package (m ²) |
|----------------|---------------------|---------------------------|
| 2,5 | 60 x 120 | 11,52 |
| 3 | 60 x 120 | 10,08 |
| 4 | 60 x 120 | 7,20 |
| 5 | 60 x 120 | 5,76 |



- High thermal insulation
- Fire safety
- Sound insulation
- Easy to apply



TECHNICAL DATA SHEET

izocam Stone Wool Duct Board

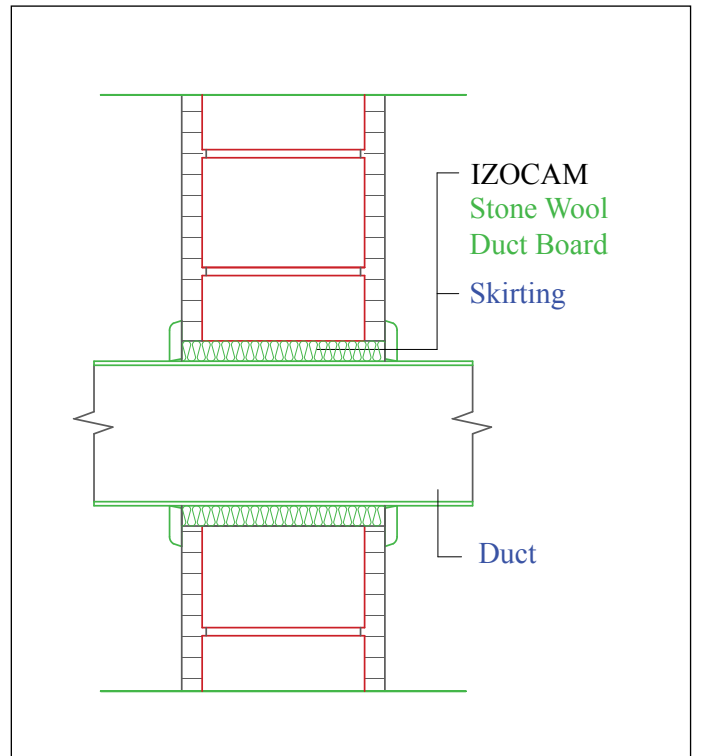
| Properties | Symbol | Unit | Description | | | | | | | Tolerance | Standard |
|---------------------------------------|---|-------------------|-------------|-------|-------|-------|-------|-------|-------|-----------|-------------------------|
| Material | - | - | Stone Wool | | | | | | | - | TS EN 14303 |
| Density | ρ | kg/m ³ | 70 | | | | | | | +/-10% | - |
| Width | w | mm | 600 | | | | | | | +/-1,5% | TS EN 822 |
| Length | l | mm | 1200 | | | | | | | +/-2% | TS EN 822 |
| Thickness | t | mm | 25 | 30 | 40 | 50 | | | T4 * | TS EN 823 | |
| Facing | - | - | Al-foil | | | | | | | - | - |
| Reaction to fire | - | - | A1 | | | | | | | - | TS EN 13501-1 |
| Declared Thermal Conductivity (10 °C) | T _{ort} | °C | 50 | 100 | 150 | 200 | 250 | 300 | 350 | - | TS EN 12667/12939 13787 |
| | λ | W/m.K | 0,039 | 0,048 | 0,059 | 0,072 | 0,087 | 0,103 | 0,122 | | |
| Specific Heat ** | c | kJ/(kg.K) | 0,84 | | | | | | | - | EN 12524 |
| Squareness | S _b | mm/m | max. 5 | | | | | | | - | TS EN 824 |
| Packaging Material | - | - | PE Film | | | | | | | - | - |
| Other Information | Maximum service temperature on the side faced with aluminium foil is 90 °C. | | | | | | | | | | |

* T4: -3% or -3 mm; +5% or +5 mm. The biggest value is chosen at minus tolerance, the smallest value is chosen at plus tolerance.

** Literature value.

Safety Reminders for Loading, Unloading, Shipping and Storing

- These operations should be done indoors in case of rainy weather conditions.
- Loading and unloading should be done by (at least) two people.
- Products should be wrapped by a waterproof cover even if the shipping distance is short.
- Products should not be superposed with pallets.
- Products should not be put into upright position.
- Products should not be stepped on and should not be used as steps.
- Products should not be pulled by their package.
- Products should be in packages (10 each) and maximum 6 packages can be superposed.
- Before binding, hard cardboards (minimum 20 x 50 cm) should be put on the corners of packages to protect against possible damages by ropes.
- Storage area should be protected against any wet threats such as rain, float, etc. Indoor spaces should be preferred.
- The packages should be put on the floor with extra care so the corners of the product especially is not damaged by a hit.



Izocam is not responsible for any problem because of misprinting. Izocam, the manufacturer, reserves the right to alter product specifications without prior notice. Izocam also manufactures special products upon request. For your requirements, you are requested to contact our Export Department.