

KALIBEL GLASS WOOL

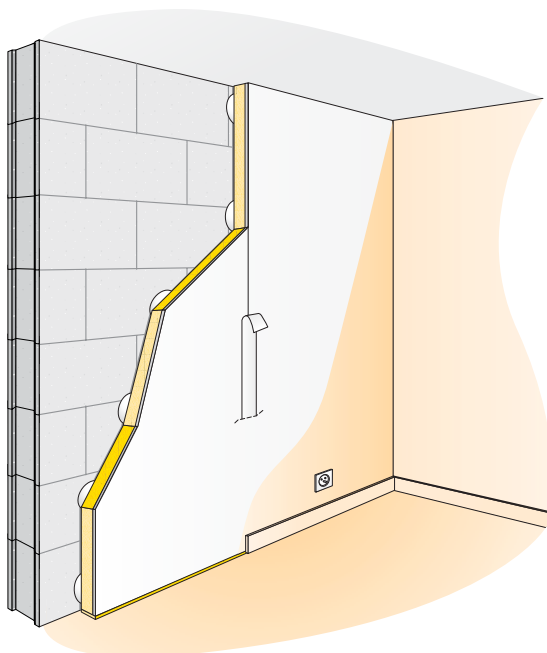


Kalibel is a composite product with gypsum board facing one side and aluminium foil in between. It is used on the inner surfaces of exterior walls, adjacent walls, internal walls of the buildings, periphery walls of staircases and elevator shafts and as internal wall lining timber framed buildings for fire safe, thermal and sound insulation purposes.

Application

Wall surface to be insulated is cleaned and prepared for the application. Boards are cut according to the wall size so that there is 1 cm. gap off the floor and 0.5 cm off the ceiling is left. Special gypsum fixing mortar is put on the glass wool side of the board, so that 3-5 kg (8-9 chunks) per square meter is applied. Kalibel boards are placed on to the wedges of 10 mm which were put in beforehand. After the boards are leaned against the wall, a rubber hammer and a gauge are used for levelling. The boards are supported until the adhesive sets. The joints are filled with a special net and paste. The application is completed with top coat paint. Since the walls with Kalibel application work with mass-spring-mass principle, they offer better sound insulation and do not impose load on the building than the one layered and heavy walls which only work with mass principle. Aluminium foil between glass wool board and gypsum board prevents the risk of condensation.

Thickness (cm)		Width x Length (cm)	Package (m ²)
Glass Wool	Gypsum Board		
3	1,25	120 x 270	103,68
5	1,25	120 x 270	71,28



- High thermal insulation
- Fire safety
- High sound insulation
- Easy to apply
- Lightweight



TECHNICAL DATA SHEET

İzocam Kalibel Glass Wool

Properties	Symbol	Unit	Description	Tolerance	Standard
Material	-	-	Glass Wool	-	-
Density	ρ	kg/m ³	75	+/-10%	-
Width	w	mm	1200	+/-1,5%	TS EN 822
Length	l	mm	2700	+/-2%	TS EN 822
Thickness	t	mm	30 50	**	TS EN 823
Facing	-	-	Gypsum Board	-	-
Reaction to fire	-	-	A2-s1,d0	-	TS EN 13501-1
Squareness	S _b	mm/m	max. 5	-	TS EN 824
Flatness	S _{max}	mm	max. 6	-	TS EN 825
Dimensional Stability	$\Delta\varepsilon_d$	%	max. 1	-	TS EN 1604
Declared Thermal Conductivity (10 °C)	λ_D	W/m.K	0,031	-	TS EN 12667/12939
Thermal Resistance	R _D	m ² .K/W	0,95 1,60	-	-
Specific Heat *	c	kJ/(kg.K)	0,84	-	EN 12524
Dynamic Elasticity *	Edyn	kN/m ²	0,8	-	DIN 52214
Packaging Material	-	-	Palette	-	-
Other Information	Kalibel is a composite board, formed with glass wool board, aluminium foil and gypsum board.				

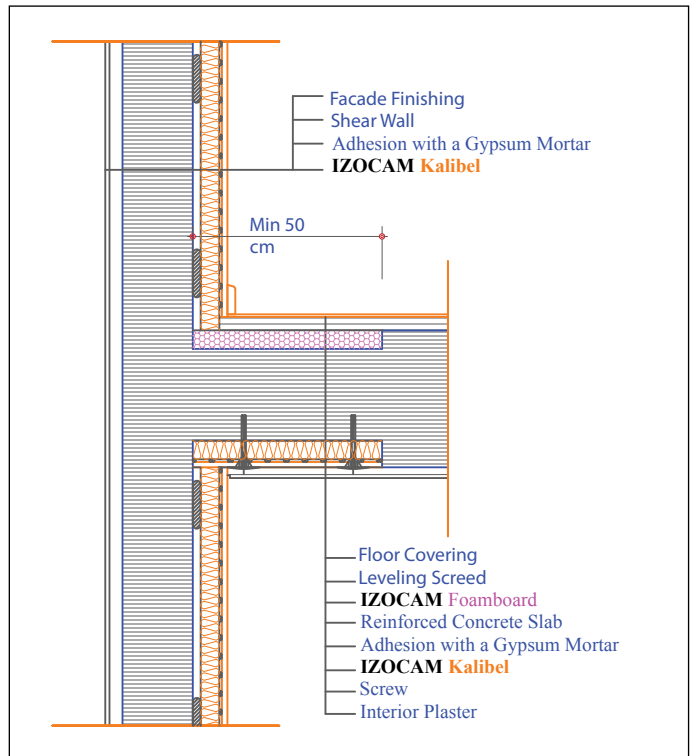
* Literature value.

** -3% or -3 mm; +10% or 10 mm. The biggest value is chosen at minus tolerance, the smallest value is chosen at plus tolerance.

Safety Reminders for Loading, Unloading, Shipping and Storing

- These operations should be done indoors in case of rainy weather conditions.
- The products should be wrapped by a waterproof cover even if the shipping distance is short.
- Products should be stored on the pallets. Damaged or defective pallets should not be used.
- Products should not be stepped on and should not be used as steps.
- Before binding, hard cardboards (minimum 20 x 50 cm) should be put on the corners of packages to protect against possible damages by ropes.
- Storage area should be protected against any wet threats such as rain, float, etc. Indoor spaces should be preferred.
- Storage area should be flat and non-slippery.
- Loading and unloading should be done by forklift or overhead crane.
- The boards should be carried to the application site one at a time by two people with extra care.

Izocam is not responsible for any problem because of misprinting. Izocam, the manufacturer, reserves the right to alter product specifications without prior notice. Izocam also manufactures special products upon request. For your requirements, you are requested to contact our Export Department.



ENCYKB2015/06

