

GLASS WOOL PARTITION WALL BOARD



It is a glass wool board faced with yellow glass tissue on one side. It is used for thermal and sound insulation of lightweight partition walls, stairwells and elevator shafts, adjacent walls, inner surfaces of exterior walls.

Application

Timber or metal construction is built first at where the application will take place. İzocam Glass Wool Partition Wall is placed into the construction. Depending on the application space, gypsum boards are fastened on the side facing the interior or on both sides. Before cladding with gypsum board, it is recommended to apply rubber tapes (İzocamtape) to the construction in order to avoid sound bridges.

Thickness (cm)	Width x Length (cm)	Package (m ²)
5	60 x 135	9,72
7,5	60 x 135	5,67
10	60 x 135	4,86



- High sound insulation
- Fire safety
- High thermal insulation
- Easy to apply
- Lightweight



TECHNICAL DATA SHEET

İzocam Glass Wool Partition Wall Board

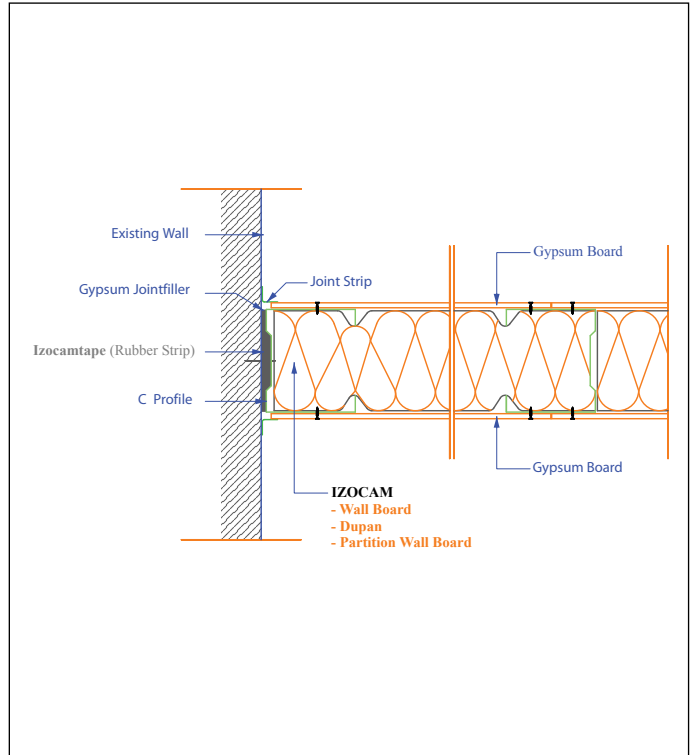
Properties	Symbol	Unit	Description			Tolerance	Standard
Material	-	-	Glass Wool			-	TS EN 13162
Density	ρ	kg/m ³	20			+/-10%	-
Width	w	mm	600			+/-1,5%	TS EN 822
Length	l	mm	1350			+/-2%	TS EN 822
Thickness	t	mm	50	75	100	T3 **	TS EN 823
Facing	-	-	Yellow Glass Tissue			-	-
Reaction to fire	-	-	A1			-	EN 13501-1
Squareness	S _b	mm/m	max. 5			-	TS EN 824
Flatness	S _{max}	mm	max. 6			-	TS EN 825
Dimensional Stability	$\Delta\varepsilon_d$	%	max. 1			-	TS EN 1604
Declared Thermal Conductivity (10 °C)	λ_D	W/m.K	0,035			-	TS EN 12667/12939
Thermal Resistance	R _D	m ² .K/W	1,40	2,10	2,85	-	-
Water Vapor Diffusion Resistance Coefficient *	μ	-	1			-	TS EN 12086
Specific Heat *	c	kJ/(kg.K)	0,84			-	EN 12524
Dynamic Elasticity *	Edyn	kN/m ²	0,8			-	DIN 52214
Packaging Material	-	-	PE Film			-	-
Other Information	Maximum service temperature on the side faced with glass tissue is 200 °C.						

* Literature value.

** T3: -3% or -3 mm; +10% or 10 mm. The biggest value is chosen at minus tolerance, the smallest value is chosen at plus tolerance.

Safety Reminders for Loading, Unloading, Shipping and Storing

- These operations should be done indoors in case of rainy weather conditions.
- Loading and unloading should be done by (at least) two people.
- Products should be wrapped by a waterproof cover even if the shipping distance is short.
- Products should not be superposed with pallets.
- Products should not be put into upright position.
- Products should not be stepped on and should not be used as steps.
- Products should not be pulled by their package.
- Products should be in packages (10 each) and maximum 6 packages can be superposed.
- Before binding, hard cardboards (minimum 20 x 50 cm) should be put on the corners of packages to protect against possible damages by ropes.
- Storage area should be protected against any wet threats such as rain, float, etc. Indoor spaces should be preferred.
- The packages should be put on the floor with extra care so the corners of the product especially is not damaged by a hit.



Izocam is not responsible for any problem because of misprinting. Izocam, the manufacturer, reserves the right to alter product specifications without prior notice. Izocam also manufactures special products upon request. For your requirements, you are requested to contact our Export Department.

