

# FOAMBOARD

2000 D - 2500 D - 3000 D - 3500 D

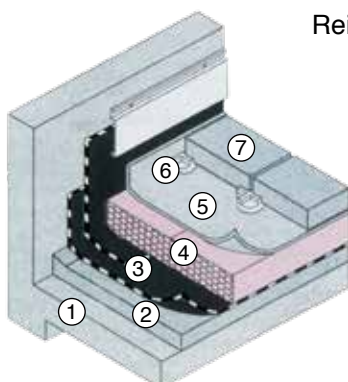


Foamboard 2000 D – 2500 D – 3000 D – 3500 D is an extruded polystyrene boards with skin surface. They are used on water proofing membrane for the thermal insulation of flat roofs.

## Application

The membrane (bituminous, pvc, tpo, etc.) forming water and vapour proofing is rolled out on existing levelling concrete. Foamboard boards of 2000 D – 2500 D – 3000 D – 3500 D are laid together without applying adhesive so that the joints are adjusted. Filter element and cover that serves as separator felt are laid on the boards. For the inaccessible flat roofs, a layer of washed round light-coloured gravel is placed on top of the separator cover in order to put weight and to reflect sun rays. For the accessible flat roofs, precast tiles (concrete, wood, etc.) are placed resting on plastic wedges. If desired, floor coverings applied with sand or grout can be used as well. For the garden flat roofs, the layers including gravel are applied like the inaccessible flat roof. Filter element and plant soil are laid out on the gravel to finish off the process.

Thickness (cm)	Width x Length (cm)	Package (m <sup>2</sup> )	Package (m <sup>3</sup> )
2	60 x 125	15	0,3000
2,5	60 x 125	12	0,3000
3	60 x 125	10,5	0,3150
4	60 x 125	7,5	0,3000
5	60 x 125	6	0,3000
6	60 x 125	5,25	0,3150
7	60 x 125	4,50	0,3150
8	60 x 125	3,75	0,3000
9	60 x 125	3,75	0,3375
10	60 x 125	3	0,3000
12	60 x 125	2,25	0,2700
15	60 x 125	2,25	0,3380



- Reinforced concrete slab ①
- Levelling concrete ②
- Waterproofing ③
- Foamboard ④
- Filter element ⑤
- Plastic wedge ⑥
- Floor covering ⑦

- High compressive strength
- High thermal insulation
- Water impermeable



# TECHNICAL DATA SHEET

## Izocam Foamboard 2000 D - 2500 D - 3000 D - 3500 D

Properties	Symbol	Unit	Description	Tolerance	Standard											
Material	-	-	Extruded Polystyrene	-	TS EN 13164											
Edge Profile	-	-	Square, Ship-lap	-	-											
Surface Shape	-	-	Skin	-	-											
Density	2000 D	$\rho$	kg/m <sup>3</sup>	min. 25	min. 26	min. 27	min. 30	-	-							
	2500 D			min. 25	min. 28		min. 30	-	-							
	3000 D			min. 28	min. 32	min. 29		min. 30	-							
	3500 D			min. 28		min. 30			-							
Width	w	mm	600						± 8 mm	TS EN 822						
Length	l	mm	1250						± 8 mm	TS EN 822						
Thickness	t	mm	20	25	30	40	50	60	70	80	90	100	120	150	T1 *	TS EN 823
Reaction to fire	-	-	E						-	TS EN 13501-1						
Thermal Resistance	R <sub>D</sub>	m <sup>2</sup> .K/W	0,55	0,70	0,85	1,10	1,40	1,70	2,00	2,25	2,55	2,85	3,40	4,25	-	TS EN 13164
Declared Thermal Conductivity (10 °C)	$\lambda_D$	W/m.K	0,035						-	TS EN 13164						
Water Vapor Diffusion Resistance Coefficient	MU	-	100						MU100	TS EN 12086						
Material Type	-	-	2000 D	2500 D	3000 D	3500 D	-	-								
Tensile Strength Perpendicular to Faces	TR	kPa	min. 200	min. 400	min. 400	min. 600	TR200 - TR400 TR600	TS EN 1607								
Compressive Strength (10 % Deformation)	$\sigma_{10}$	kPa	min. 200	min. 250	min. 300	min. 350	CS(10/Y) 200 250 300 350	TS EN 826								
Dimensional Stability Under Specified Thermal and Humidity Conditions	$\Delta\epsilon_t, \Delta\epsilon_b, \Delta\epsilon_d$	%	max. 5 **						DS (70,90)	TS EN 1604						
Dimensional Stability Under Specified Thermal and Compressive Load Conditions	$\epsilon_t$	%	max. 5 ***						DLT(1)5 DLT(2)5	TS EN 1605						
Freeze Thaw Resistance	FTCD	%	max. 1						FTCD <sub>1</sub>	TS EN 12091						
Long Term Water Absorption with Total Immersion	W <sub>it</sub>	%	max. 0,7						WL(T)0,7	TS EN 12087						
Long Term Water Absorption with Diffusion	W <sub>av</sub>	%	max. 3						WD(V)3	TS EN 12088						
Packaging Material	-	-	PE Film						-	-						
Other Information	There is no ship-lap in 20 mm thickness.															

\* T1 : +2 for < 50 mm; -2,+3 for 50 - 120 mm; -2,+3 for > 120 mm  
According to customer demands can be product in T2 or T3 thickness class.

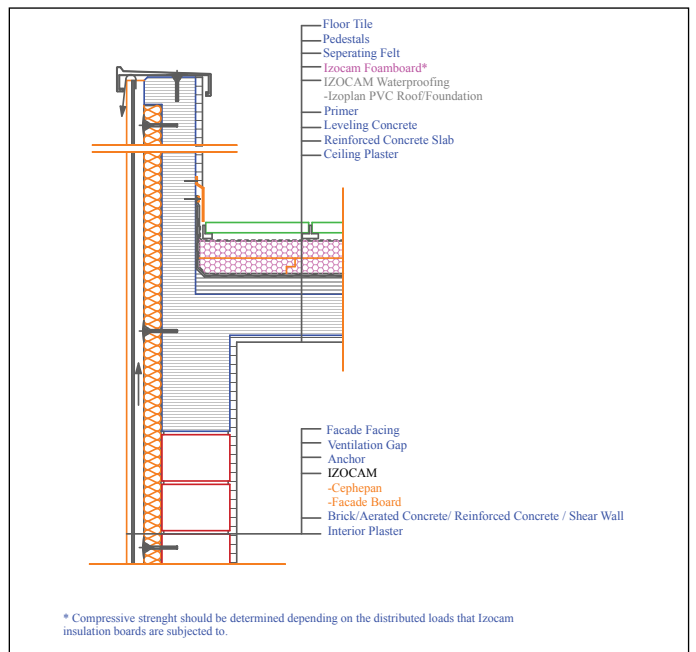
\*\* TS EN 13164 / Item 4.3.2

\*\*\* TS EN 13164 / Item 4.3.3

### Safety Reminders for Loading, Unloading, Shipping and Storing

- Loading and unloading should be done by (at least) two people.
- The packages should be put on top of each other with extra care.
- Only backshutter of the truck body should be opened during unloading.
- Unloading should be carried out from backside to the front.
- Products should not be put into upright position during shipping and storing.
- Products should not be pulled by their package.
- Products should not be stepped on.
- The packages should be put on the floor with extra care so the corners of the product especially is not damaged by a hit.
- Storing can be carried out by superposing the products with or without pallets.
- Products should not be shipped with the materials containing organic solvents (thinner, paint, fuel oil, acetone, etc.).
- Combustible, flammable, hazardous materials should not be stored in storage area and there should be fire extinguishing equipment available.

Izocam is not responsible for any problem because of misprinting. Izocam, the manufacturer, reserves the right to alter product specifications without prior notice. Izocam also manufactures special products upon request. For your requirements, you are requested to contact our Export Department.



ENXPSF2D2015/06