



Izocam Dupan is a glass wool board manufactured with silicone spread and faced with yellow glass tissue on both sides. It is utilized at cavity walls, at double layer lightweight partition walls for fire safe thermal insulation, sound insulation or acoustic purposes.

Application

When they are used at cavity walls, the boards are cut to size and applied loose between two wall components such as brick, AAC blocks, concrete blocks. For the applications of thermal and sound insulation at lightweight partitions walls, after the boards are placed into the structural construction made of aluminium profiles, gypsum boards are fastened on both sides by the help of profiles. Before cladding with gypsum board rubber tapes (Izocamtape) should be applied to the construction in order to avoid sound bridges.

Thickness (cm)	Width x Length (cm)	Package (m ²)
3	60 x 270	19,44
4	60 x 270	16,20
5	60 x 270	12,96
6	60 x 270	9,72
7,5	60 x 270	8,10
10	60 x 270	6,48



- High sound insulation
- Fire safety
- High thermal insulation
- Acoustic arrangement
- Easy to apply
- Available in different sizes
- Lightweight

TECHNICAL DATA SHEET

izocam Dupan

Properties	Symbol	Unit	Description						Tolerance	Standard
Material	-	-	Glass Wool						-	TS EN 13162
Density	ρ	kg/m ³	28						+/-10%	-
Width	w	mm	600						+/-1,5%	TS EN 822
Length	l	mm	2700						+/-2%	TS EN 822
Thickness	t	mm	30	40	50	60	75	100	T3 **	TS EN 823
Facing	-	-	Yellow Glass Tissue (Double Side)						-	-
Reaction to fire	-	-	A1						-	TS EN 13501-1
Squareness	S _b	mm/m	max. 5						-	TS EN 824
Flatness	S _{max}	mm	max. 6						-	TS EN 825
Dimensional Stability	$\Delta\epsilon_d$	%	max. 1						-	TS EN 1604
Declared Thermal Conductivity (10 °C)	λ_D	W/m.K	0,033						-	TS EN 12667/12939
Thermal Resistance	R _D	m ² .K/W	0,90	1,20	1,50	1,80	2,25	3,00	-	-
Short Term Water Absorption	W _p	kg/m ²	max. 1						-	TS EN 1609
Specific Heat *	c	kJ/(kg.K)	0,84						-	EN 12524
Water Vapor Diffusion Resistance Coefficient *	μ	-	1						-	TS EN 12086
Dynamic Elasticity *	Edyn	kN/m ²	0,8						-	DIN 52214
Packaging Material	-	-	PE Bag						-	-

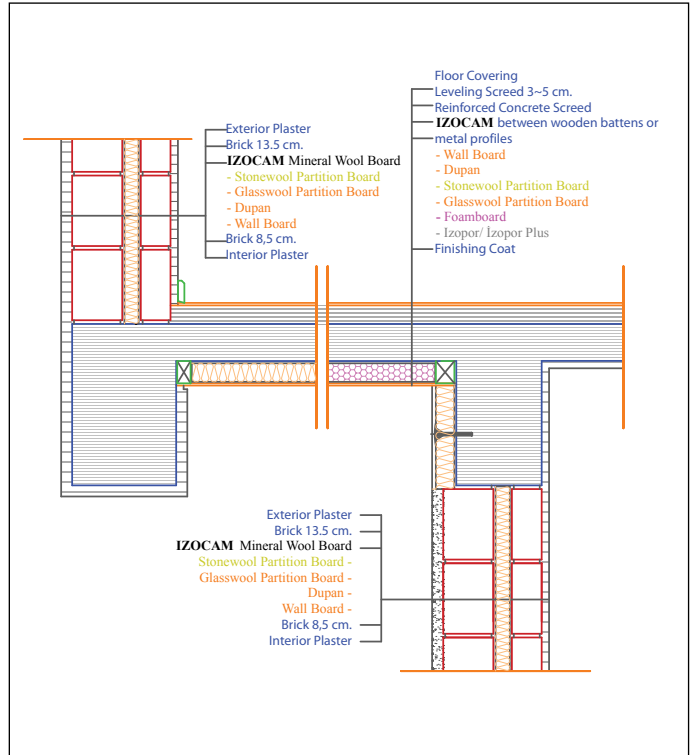
* Literature value.

** T3: -3% or -3 mm; +10% or 10 mm. The biggest value is chosen at minus tolerance.

Safety Reminders for Loading, Unloading, Shipping and Storing

- These operations should be done indoors in case of rainy weather conditions.
- Loading and unloading should be done by (at least) two people.
- Products should be wrapped by a waterproof cover even if the shipping distance is short.
- Products should not be superposed with pallets.
- Products should not be put into upright position.
- Products should not be stepped on and should not be used as steps.
- Products should not be pulled by their package.
- Products should be in packages (10 each) and maximum 6 packages can be superposed.
- Before binding, hard cardboards (minimum 20 x 50 cm) should be put on the corners of packages to protect against possible damages by ropes.
- Storage area should be protected against any wet threats such as rain, float, etc. Indoor spaces should be preferred.
- The packages should be put on the floor with extra care so the corners of the product especially is not damaged by a hit.

Izocam is not responsible for any problem because of misprinting. Izocam, the manufacturer, reserves the right to alter product specifications without prior notice. Izocam also manufactures special products upon request. For your requirements, you are requested to contact our Export Department.



ENCYDP2015/06