

# COMFORT

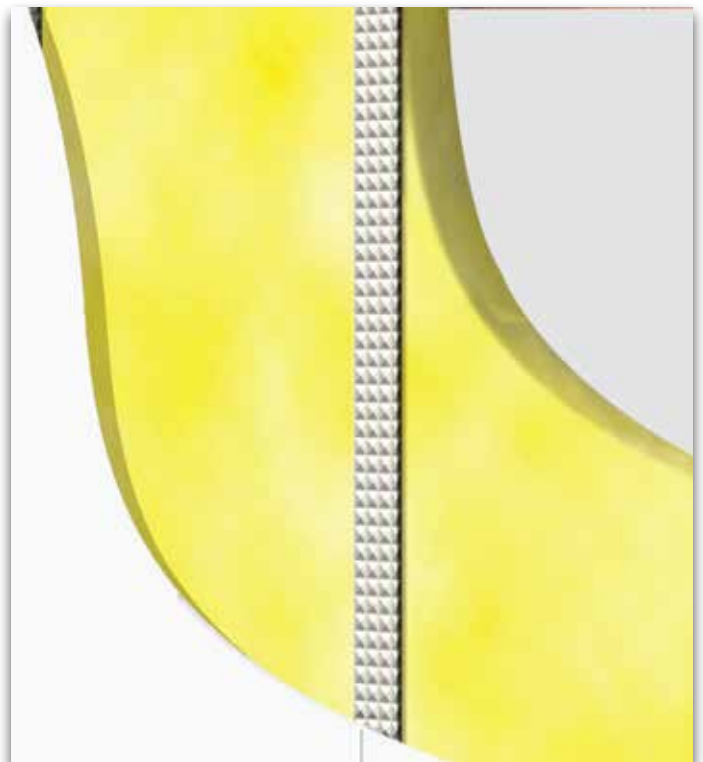
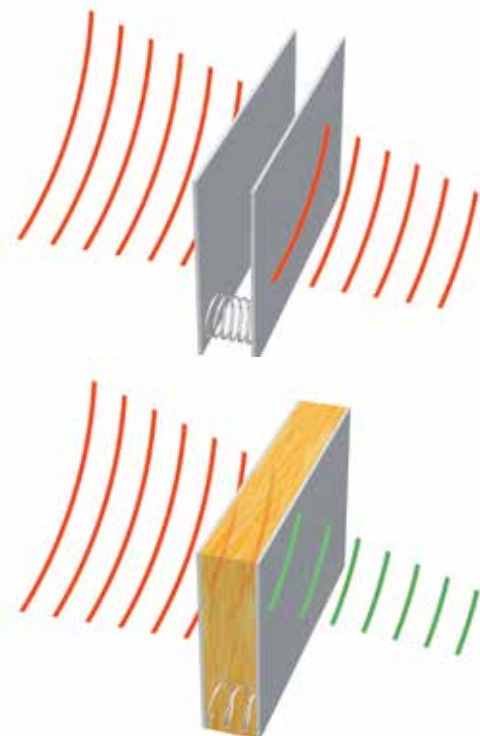


It is a glass wool blanket faced with nonwoven textile on both sides. Owing to its excellent facing, it is used for thermal and sound insulation, as well as fire safety of lightweight partition walls. Owing to its perfect facing it offers ease of application.

## Application

Timber or metal construction is built first at where the application will take place. İzocam Glass Wool Comfort is placed into the construction. Depending on the application space, gypsum boards are fastened on the side facing the interior or on both sides. Before cladding with gypsum board, it is recommended to apply rubber tapes (İzocamtape) to the construction in order to avoid sound bridges.

Thickness (cm)	Width x Length (cm)	Package (m <sup>2</sup> )
5	(2x60) x 1080	12,96
7,5	(2x60) x 810	9,72
10	(2x60) x 540	6,48



- Thermal insulation
- Fire safety
- High sound insulation
- Easy to apply
- Lightweight



## İzocam Comfort

Properties	Symbol	Unit	Description			Tolerance	Standard
Material	-	-	Glass Wool			-	TS EN 13162
Density	ρ	kg/m³	16			+/-10%	-
Width	w	mm	1200 (600x2)			+/-1,5%	TS EN 822
Length	l	mm	10800	8100	5400	+/-2%	TS EN 822
Thickness	t	mm	50	75	100	T1 **	TS EN 823
Facing	-	-	Both sides are faced with nonwoven textile			-	-
Reaction to fire	-	-	A1			-	TS EN 13501-1
Dimensional Stability	Δε <sub>d</sub>	%	max.1			-	TS EN 1604
Declared Thermal Conductivity (10 °C)	λ <sub>D</sub>	W/m.K	0,040			-	TS EN 12667/12939
Thermal Resistance	R <sub>D</sub>	m².K/W	1,25	1,85	2,50	-	-
Water Vapor Diffusion Resistance Coefficient *	μ	-	1			-	TS EN 12086
Specific Heat *	c	kJ/(kg.K)	0,84			-	EN 12524
Dynamic Elasticity *	Edyn	kN/m²	0,8			-	DIN 52214
Packaging Material	-	-	PE Film			-	-
Other Information	Each package consists of two rolls of Comfort Blanket..						

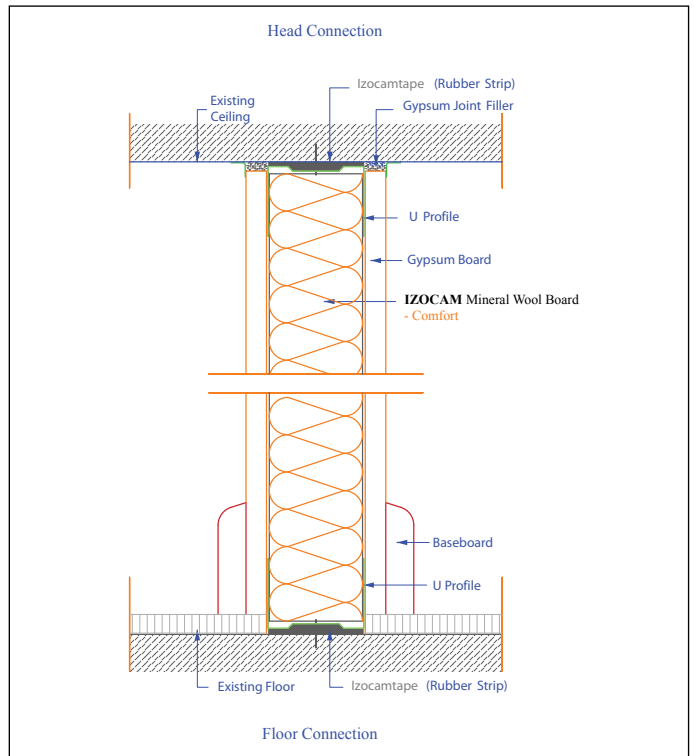
\* Literature value.

\*\* T1: -5% or -5 mm, the biggest value is chosen at minus tolerance, the smallest value is chosen at plus tolerance.

### Safety Reminders for Loading, Unloading, Shipping and Storing

- These operations should be done indoors in case of rainy weather conditions.
- Loading and unloading should be done by (at least) two people.
- Products should be wrapped by a waterproof cover even if the shipping distance is short.
- Products should not be superposed with pallets.
- Products should not be put into upright position.
- Products should not be stepped on and should not be used as steps.
- Products should not be pulled by their package.
- Before binding, hard cardboards (minimum 20 x 50 cm) should be put on the corners of packages to protect against possible damages by ropes.
- Storage area should be protected against any wet threats such as rain, float, etc. Indoor spaces should be preferred.

Izocam is not responsible for any problem because of misprinting. Izocam, the manufacturer, reserves the right to alter product specifications without prior notice. Izocam also manufactures special products upon request. For your requirements, you are requested to contact our Export Department.



ENCYKF2015/06