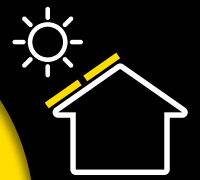


COLLECTOR BLANKET

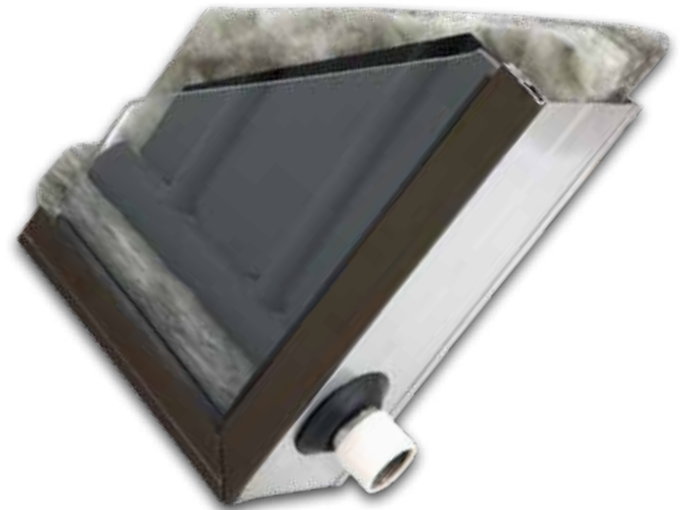


It is a glass wool blanket manufactured with black color in special sizes. It is used for thermal insulation of solar collectors.

Application

For the thermal insulation applications of solar collectors, collector blankets and boards are used together. It is also possible to use glass wool boards faced with aluminium foil in order to prevent heat losses from absorptive surface to the inside body due to the radiation and in order to reflect that to the selective surface. If the case height is suitable, the product is placed between absorbing surface and the soffit insulation by leaving a 10 – 20 mm gap. In order to ventilate the collectors, 2-3 mm diameter holes should be drilled where rain water cannot reach. Otherwise, it may cause condensation of water vapor on window panes at nights and that may affect the efficiency of the collector. For the applications carried out in order to prevent the heat losses from hot water storage surfaces by convection and radiation, constructive precautions should be taken against spacers. Care should be taken for blankets in order not to lose their thicknesses.

Thickness (cm)	Width x Length (cm)	Package (m ²)
5	93 x 1950	18,13
5	93 x 2000	18,60



- High thermal insulation
- Fire safety
- Easy to apply
- Available in different sizes
- Lightweight



TECHNICAL DATA SHEET

Izocam Collector Blanket

Properties	Symbol	Unit	Description					Tolerance	Standard
Material	-	-	Glass Wool					-	TS EN 14303
Density	ρ	kg/m ³	11	14				+/-10%	-
Width	w	mm	930					+/-1,5%	TS EN 822
Length	l	mm	19500					+/-2%	TS EN 822
Thickness	t	mm	50					T1 **	TS EN 823
Facing	-	-	Unfaced					-	-
Reaction to fire	-	-	A1					-	TS EN 13501-1
Declared Thermal Conductivity (10 °C)	T	°C	10	25	50	75	100	-	TS EN 12667/12939 13787
	λ_D	W/m.K	0,040	0,046	0,055	0,061	0,067		
Max. Service Temperature	-	°C	250					-	-
Water Vapor Diffusion Resistance Coefficient *	μ	-	1					-	TS EN 12086
Specific Heat *	c	kJ/(kg.K)	0,84					-	EN 12524
Packaging Material	-	-	PE Film					-	-
Other Information	Colour of the product is grey.								

* Literature value.

** T1: -5% or -5 mm; +∞. The biggest value is chosen at minus tolerance.

Safety Reminders for Loading, Unloading, Shipping and Storing

- These operations should be done indoors if the weather is rainy.
- Loading and unloading should be done by (at least) two people.
- Products should be put on top of each other with extra care.
- Only backshutter of the truck body should be opened during unloading.
- Unloading should be carried out from backside to the front.
- Products should be wrapped by a waterproof cover even if the shipping distance is short.
- Products should not be put into upright position during shipping and storing.
- Storing should be carried out by using pallets. But they should not superposed with pallets.
- Products should not be pulled by their package.
- Products should not be stepped on and should not be used as steps.
- The packages should be put on the floor with extra care so the corners of the product especially is not damaged by a hit.

Izocam is not responsible for any problem because of misprinting. Izocam, the manufacturer, reserves the right to alter product specifications without prior notice. Izocam also manufactures special products upon request. For your requirements, you are requested to contact our Export Department.

